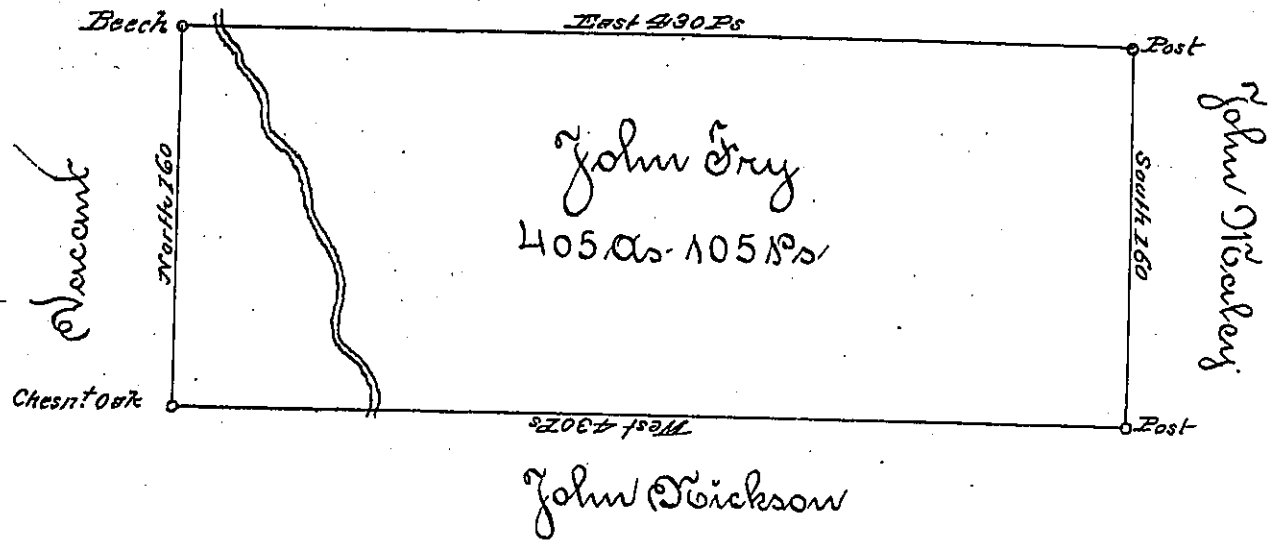


John Buckwalter



Situated on the Waters of Two Lick Creek in Wheatfield Township Westmoreland County: containing 405 Acres & 105 perches & allowance of six p. Cent for Roads &c Surveyed for John Fry the 21st day of Novem^r 1794 on Warrant dated the 3^d day of May 1793

Daniel Broadhead Esq^r D. F.

James Ross D. D.

IN TESTIMONY that the above is a copy of the original remaining on file in the Department of Internal Affairs of Pennsylvania, made conformably to an Act of Assembly approved the 16th day of February, 1833, I have hereunto set my Hand and caused the Seal of said Department to be affixed at Harrisburg, this

first day of August 1894

John P. Stewart
Secretary of Internal Affairs